

# CERTIFICATE OF LOCATION OF GOVERNMENT CORNER

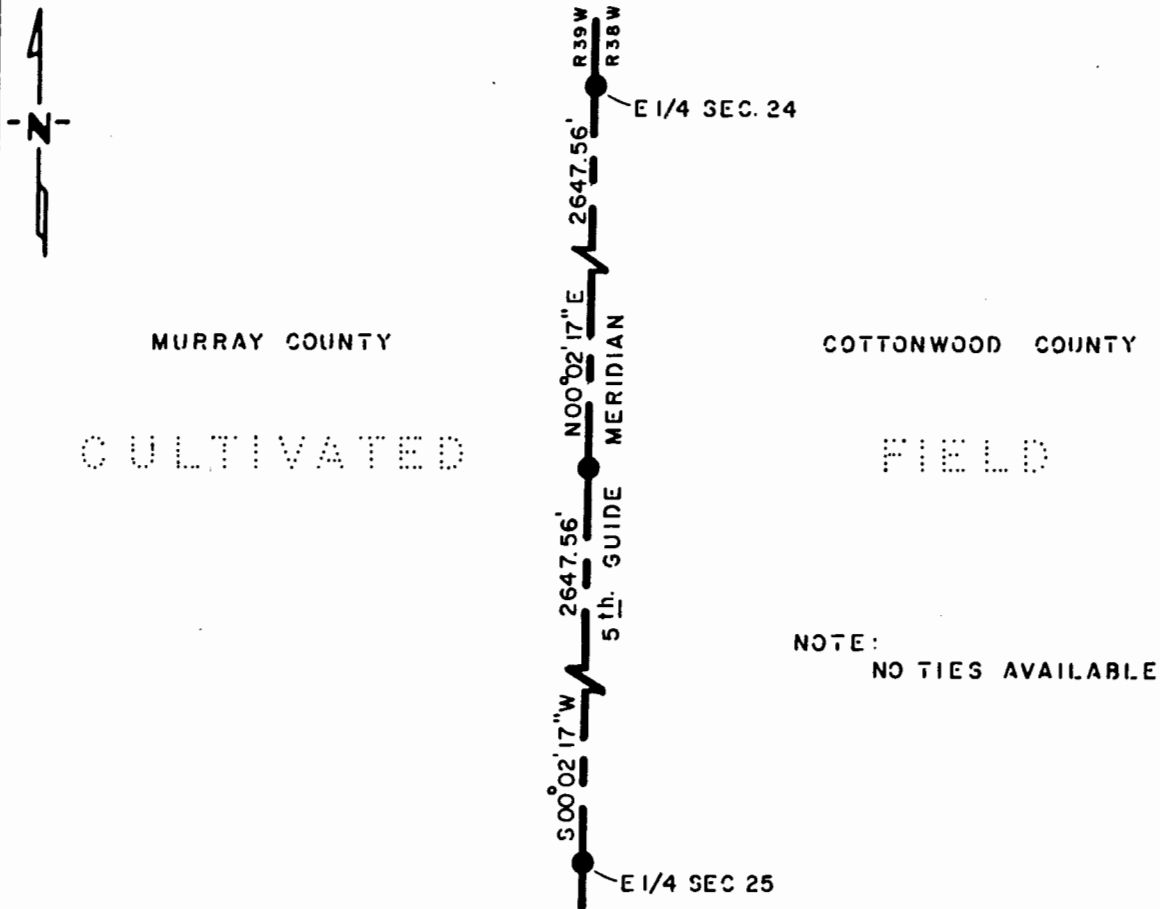
NORTHEAST Corner of Section 25, Township 105 N., Range 39 W., 5 th. P.M.

STATE OF MINNESOTA, County of MURRAY

At the corner location shown on the sketch:

- On \_\_\_\_\_ found a \_\_\_\_\_  
DATE
- left monument as found,  lowered monument,  removed monument (explain)
- On 6-24-85 placed a 1 1/4" x 1 1/4" x 20" PERFORATED STEEL TUBE WITH  
DATE  
ALUMINUM CAP STAMPED "D.N.R. SURVEY MARKER", UP 0.2'

### SKETCH OF REFERENCE TIES



Statement of evidence relative to this corner location is on back of page.

J. B. M. 7-24-85  
9-158

I hereby certify that this document and the data contained herein was prepared by me or under my direct supervision.

Bruce W. Sheppard 12/20/85  
DATE

Registration No. 17003

Land Surveyor,  Professional Engineer

County Surveyor,  County Engineer

### OFFICE OF THE COUNTY RECORDER

County of \_\_\_\_\_

I hereby certify that this document was filed in the Co. Recorders office at \_\_\_\_\_ .M. on the \_\_\_\_\_ day of \_\_\_\_\_ A.D., 19 \_\_\_\_\_

County Recorder \_\_\_\_\_

By \_\_\_\_\_, Deputy

DOCUMENT NO. \_\_\_\_\_

Northeast Corner Section 25, Township 105 North, Range 39 West

This corner was originally established by the U. S. General Land Office survey in 1857. The government notes show:

set post, deposited charcoal, made mound, trench, and pits and planted plum seed northeast and southwest

In April 1983, the DNR Bureau of Engineering contacted the following for corner information:

Cottonwood County Offices of the Recorder and Highway Engineer  
Murray County Offices of the Recorder and Highway Engineer  
Sioux Engineering of Windom  
Martin Land Surveying of Worthington

The following information was obtained from the Cottonwood County Recorder's Office:

Plat 49 contains a resurvey of Township 105 North, Range 38 West done by C. W. Gove, County Surveyor, in 1898. Plat shows that corner was established:

598 feet west of meander corner number 15  
1749 feet north of meander corner number 2  
1227.5 feet south of meander corner number 3

A 2½" by 2½" by 30" cast iron stake was set to mark this location.

The following information was obtained from the Office of Sioux Engineering:

A copy of a resurvey plat of Township 105 North, Range 38 West, obtained from Howard Boeck of Westbrook, and done by C. W. Gove, County Surveyor, in 1898, shows corner but does not indicate what was found or set. Corner is shown:

598 feet west of meander corner number 15  
1749 feet north of meander corner number 2  
1227.9 feet south of meander corner number 3

The following information was obtained from the Cottonwood County Recorder's Office:

A resurvey plat of Township 105 North, Range 38 West, done by C. W. Gove, County Surveyor, in 1898, shows corner but does not indicate what was found or set. Corner is shown:

598 feet west of meander corner number 15  
1749 feet north of meander corner number 2  
1227.9 feet south of meander corner number 3

The following information was obtained from the Murray County Recorder's Office:

Surveyor's Record Book A on Page 54 contains a survey date and surveyor not indicated. Survey shows corner but does not indicate what was found or set. Corner is shown:

40.60 chains (2679.60 feet) from the north quarter corner of Section 25

Northeast Corner Section 25, Township 105 North, Range 39 West

The following information was obtained from the DNR Bureau of Engineering's Office:

A 1935 survey shows corner but does not indicate what was found or set. Corner is shown:

1138 feet from meander corner number 3

1020 feet from a 1" by 18" iron stake that is on line between corner and meander corner number 3

In 1952, this corner was established on the southerly extension of a line from the northeast corner of Section 24 to the east quarter corner of Section 24 and on the easterly extension of the center line of an east-west road west. Survey does not indicate what was set to mark this location.

In May 1983, the DNR Bureau of Engineering traversed to the area of the corner and found its location to be in a cultivated field. Then the lost position for corner was computed using the northeast corner of Section 36 and the east quarter corner of Section 24. A 50 foot diameter area the center being at the lost position was scanned with an electronic metal locator but no metal attraction was obtained. Also scanned a 25 foot diameter area 1020 feet north of the lost position with an electronic metal locator but no metal attraction was obtained.

Accept the lost position as the location of the corner.

Traverse information is available from the DNR Bureau of Engineering.

67hab